

Technical data sheet

Product features



Rack conveyor dishwasher 270, cold water, right exit, corner pre-wash, heat recovery system

Model	SAP Code	00018467
--------------	-----------------	----------



- To the product for free: 1x RM Clean+ 12 kg (00012271) and 1x RM Rinse+ 10 kg (00012273)
- Display type: Touch display
- Number of programs: 5
- Number of skin: 2
- Maximal rack feed [racks/h]: 270
- Door clear height [mm]: 450
- Rack size [mm]: 500x500
- Water consumption of the washing cycle [l/basket]: 0,6-1,1
- Washing cycle time [s/basket]: 18
- Detergent and rinse pump system: ProDose - accurate dosing with a peristaltic pump
- Wash pump type: two-way - DuoFlow
- Detergent dispenser: Yes
- Rinse aid dispenser: Yes

SAP Code	00018467	Boiler power [kW]	28.000
Net Width [mm]	3096	Basin volume [l]	70
Net Depth [mm]	990	Tank power [kW]	10.500
Net Height [mm]	1615	Water consumption of the washing cycle [l/basket]	0,6-1,1
Net Weight [kg]	640.00	Washing cycle time [s/basket]	18
Power electric [kW]	44.100	Maximal rack feed [racks/h]	270
Loading	400 V / 3N - 50 Hz	Door clear height [mm]	450
Boiler capacity [l]	34.00	Rack size [mm]	500x500

Technical data sheet

Technical drawing



Rack conveyor dishwasher 270, cold water, right exit, corner pre-wash, heat recovery system

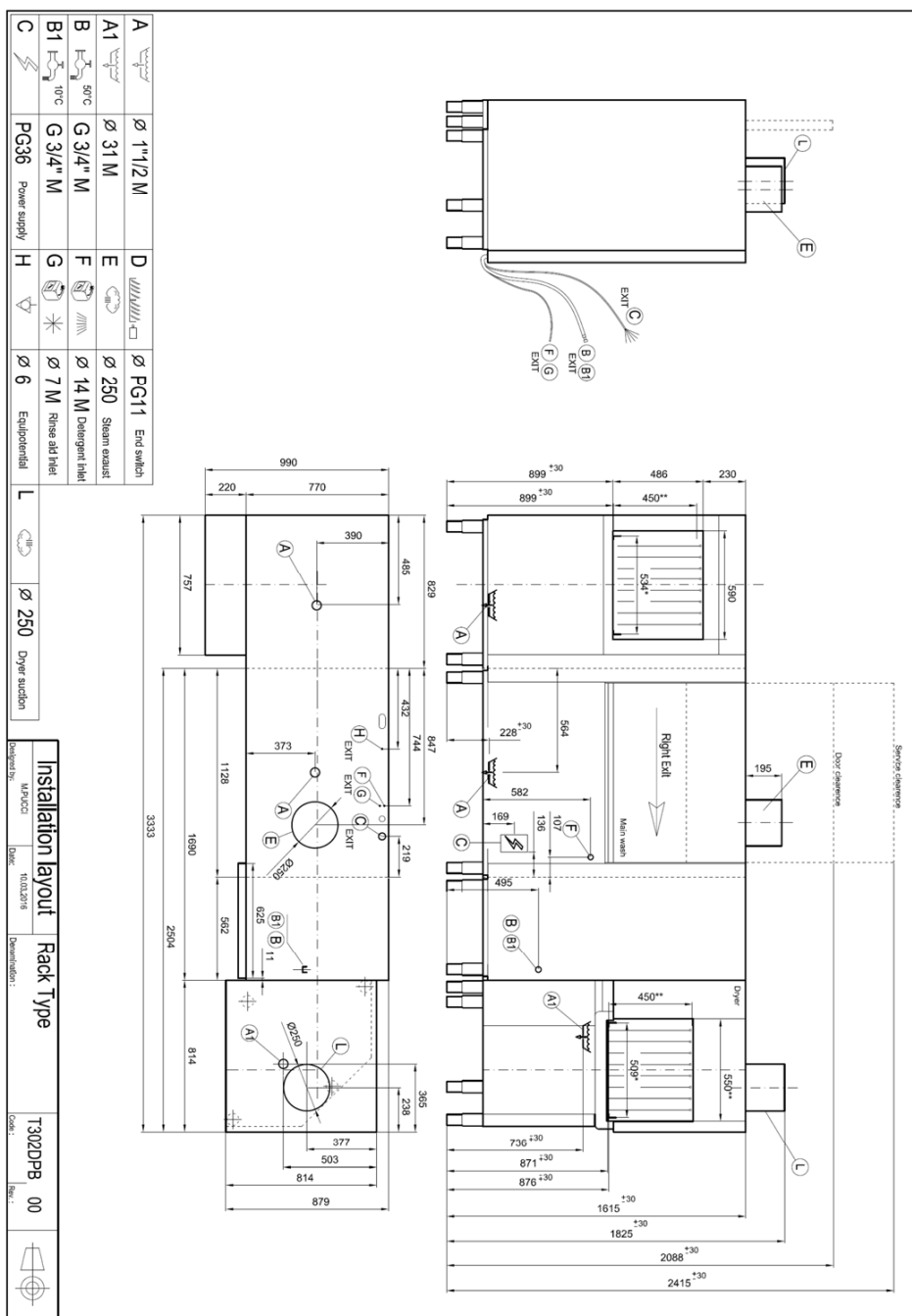
Model

SAP Code

00018467

TECHNICAL FILE

2021



Technical data sheet

Technical parameters



Rack conveyor dishwasher 270, cold water, right exit, corner pre-wash, heat recovery system

Model	SAP Code	00018467
--------------	-----------------	----------

1. SAP Code:

00018467

15. Number of programs:

5

2. Net Width [mm]:

3096

16. Opening of device:

Retractable up

3. Net Depth [mm]:

990

17. Door clear height [mm]:

450

4. Net Height [mm]:

1615

18. Inlet pressure [bar]:

0,5-4

5. Net Weight [kg]:

640.00

19. Adjustable feet:

Yes

6. Gross Width [mm]:

3300

20. Number of skin:

2

7. Gross depth [mm]:

1200

21. Modular construction:

Yes

8. Gross Height [mm]:

2060

22. Pre-wash module:

Yes

9. Gross Weight [kg]:

690.00

23. Maximal rack feed [racks/h]:

270

10. Device type:

Electric unit

24. Self-cleaning cycle:

No

11. Control type:

Touchscreen

25. Boiler capacity [l]:

34.00

12. Material:

AISI 310

26. Boiler power [kW]:

28.000

13. Power electric [kW]:

44.100

27. Basin volume [l]:

70

14. Loading:

400 V / 3N - 50 Hz

28. Tank power [kW]:

10.500

Technical data sheet

Technical parameters



Rack conveyor dishwasher 270, cold water, right exit, corner pre-wash, heat recovery system

Model

SAP Code

00018467

29. Number of washing arms:

5

30. Number of rinsing arms:

5

31. Number of arms for both rinsing and washing:

1

32. Arm connection:

Click-clack - easy removal with one hand

33. Washing arm type:

Firm

34. Washing arm material:

Stainless steel

35. Atmospheric boiler with rinse pump:

Yes

36. Rinsing arm type:

Firm

37. Rinsing arm material:

Stainless steel

38. Deep drawn tank:

Yes

39. Drain filter:

ProGressive + Evolution3 - triple filtration captures particles up to 0.8 mm in size, electronically controlled partial discharge before the rinsing phase ensures 0% loss of clean water into the waste

40. Thermostop:

Yes

41. Boiler thermostat adjust:

Yes

42. Rack feed capacity:

160-165-180-210-270

43. Detergent and rinse pump system:

ProDose - accurate dosing with a peristaltic pump

44. Energy Saving system:

Energy saving mode

45. Rinse system:

UltraRinse3 - composite arms common for rinsing and washing with geometry for spraying rinse water in thin jets directly against dishes

46. Heating system:

HotWash - System of simultaneous operation of the heating element of the bath and the boiler, reducing the time for starting the next cycle

47. Hot water electric valve:

No

48. Rack size [mm]:

500x500

49. Min supply water temperature [°C]:

10

50. Max supply water temperature [°C]:

60

51. Built-in softener:

No

52. Display type:

Touch display

Technical data sheet

Technical parameters



Rack conveyor dishwasher 270, cold water, right exit, corner pre-wash, heat recovery system

Model

SAP Code

00018467

53. Display size:

5"

54. Location of control panel:

On the front panel - long side

55. Drain pump:

No

56. Self-diagnostics:

Yes

57. Double rinse:

Yes

58. Wash pump type:

two-way - DuoFlow

59. Detergent dispenser:

Yes

60. Rinse aid dispenser:

Yes

61. Water consumption of the washing cycle [l/basket]:

0,6-1,1

62. Washing cycle time [s/basket]:

18

63. Rinse water temperature [°C]:

82 (65)

64. Program High Capacity:

Yes

65. Program General purpose:

Yes

66. Program Prolonged contact (DIN 10534):

Yes

67. Program Glasses:

Yes

68. Cross-section of conductors CU [mm²]:

25

– Výkon (kW): 17-22 (230 V); 30-38 (400 V)

69. Water supply connection:

3/4"

70. Diameter nominal:

DN 50